



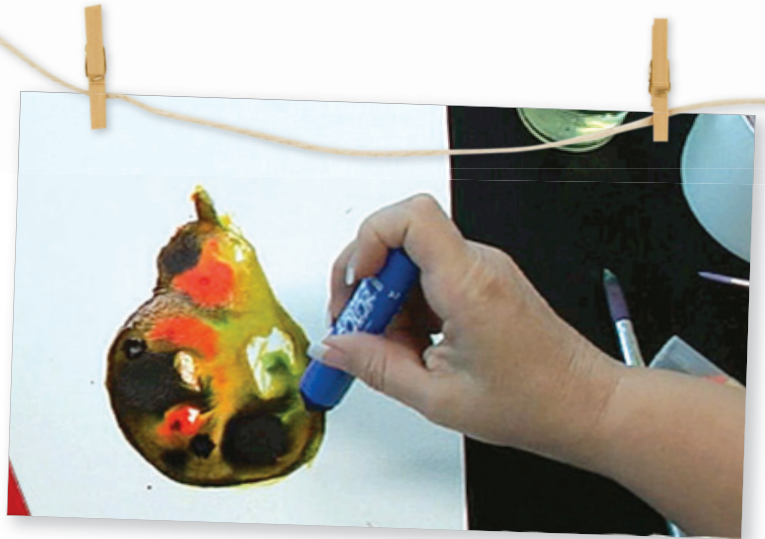
Mega Markers Pear Artwork

Micador Mega Markers create amazing results when mixed with water.

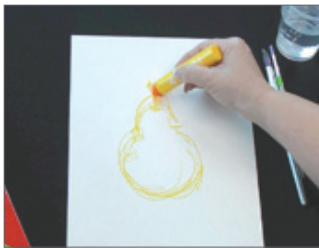
Follow these steps and learn how to produce beautiful watercolour effects with this pear artwork, and create a unique piece for your home or classroom.

You'll need...

- Roymac Rains Watercolour Paper
- Micador Mega Markers
- Roymac Achiever round size 6



Let's start...



1.

Design

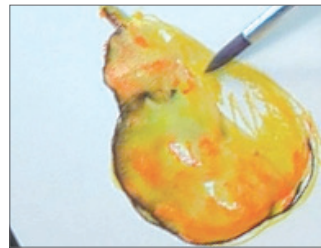
Use a yellow Mega Marker to draw the shape of the pear and roughly colour it in. You don't need to be too careful with how neat you are, the markers are watersoluble and we will soon blend with water.



2.

Light and Dark

Shade the pear using the orange marker and then outline the shaded side of the pear with black.



3.

Watercolour

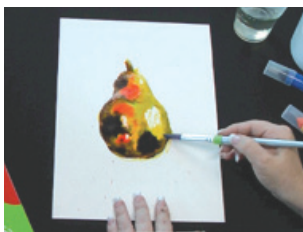
Now wet the brush and paint over the marker, allowing it to blend together and create beautiful watercolours.



4.

Colour Explosion

Take the orange marker and with a relative amount of force, hit the nib down onto the water and watch the colour flow and bleed into your work. Do the same with the black marker.



5.

Touch Up

You can touch up your work at any time with a wet brush, this will help to blend the ink together. Then your artwork is ready to be displayed!



For free activities and more micador.com.au





Glow in the dark: Nocturnal Animals

Nocturnal animals are fascinating creatures, but as they are more active at night they are hard to spot - until now!

Print out your chosen nocturnal animal from the templates provided over the page and choose from a possum, bat or owl – or just print them all!

Using our fluoro products, you can create your own nocturnal scene and bring them to life with the Micador Dark Arts Magic Black Light!

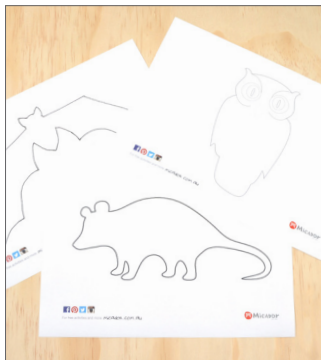
You'll need...

- Micador HB essential pencil
- Roymac Rains watercolour paper (or cartridge paper)
- A soft brush (we used Roymac Achiever, Round No. 6)
- Micador Dark Arts Magic Black Light
- Micador Dark Arts Fluoro Paint Discs (or early stART Low-Mess Washable Fluoro Paint Discs)

Other Micador fluoro products you can use...

- Micador Large Oil Pastels - Fluoro
- Micador Fluoro Silky Twistaz

Let's start...



1. Print your animal

Print out your chosen Micador nocturnal animal template.

For best results trace onto Roymac Rains watercolour paper (or cartridge paper as it will last longer than copy paper, which will buckle and rip when wet).



2. Add pencil detail

Depending on the animal chosen, add detail with pencil. Try ears, eyes, nose or claws.

Add tone and shadows to accentuate the animal's features and patterns of its fur.

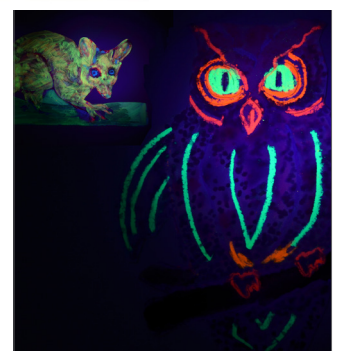
If using our fluoro oil pastels, use a resist technique and draw stripes and line detail prior to painting. As water resists oil, you will retain the detail applied.



3. Painting time

Paint over outlines with Micador fluoro watercolour paint. Leave eyes unpainted until the end, so you maintain the whites of the eyes and add your chosen colour to the iris (e.g. blue or yellow).

Once paint has dried, try Micador Fluoro Silky Twistaz to add some fun detail, like lines or spots! As this product is water-soluble it must be applied after painting.

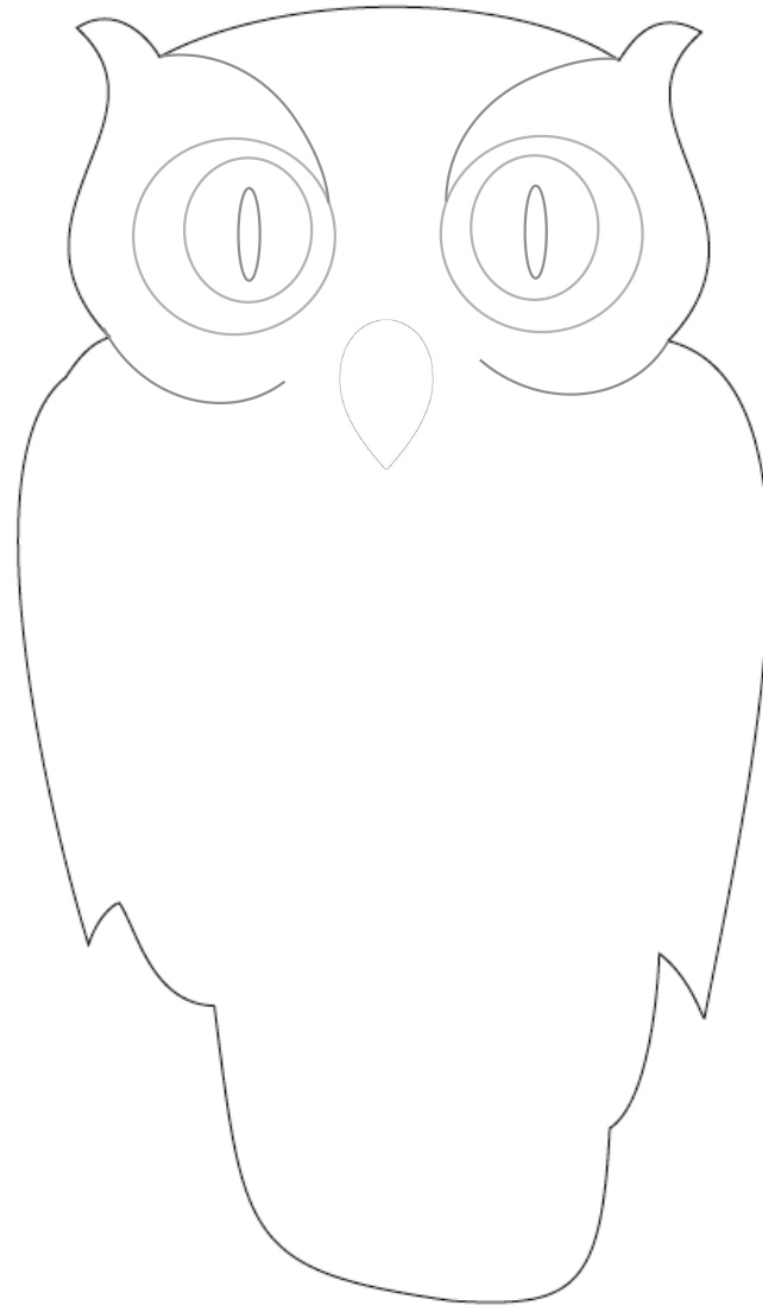


4. Ready, Set, GLOW!

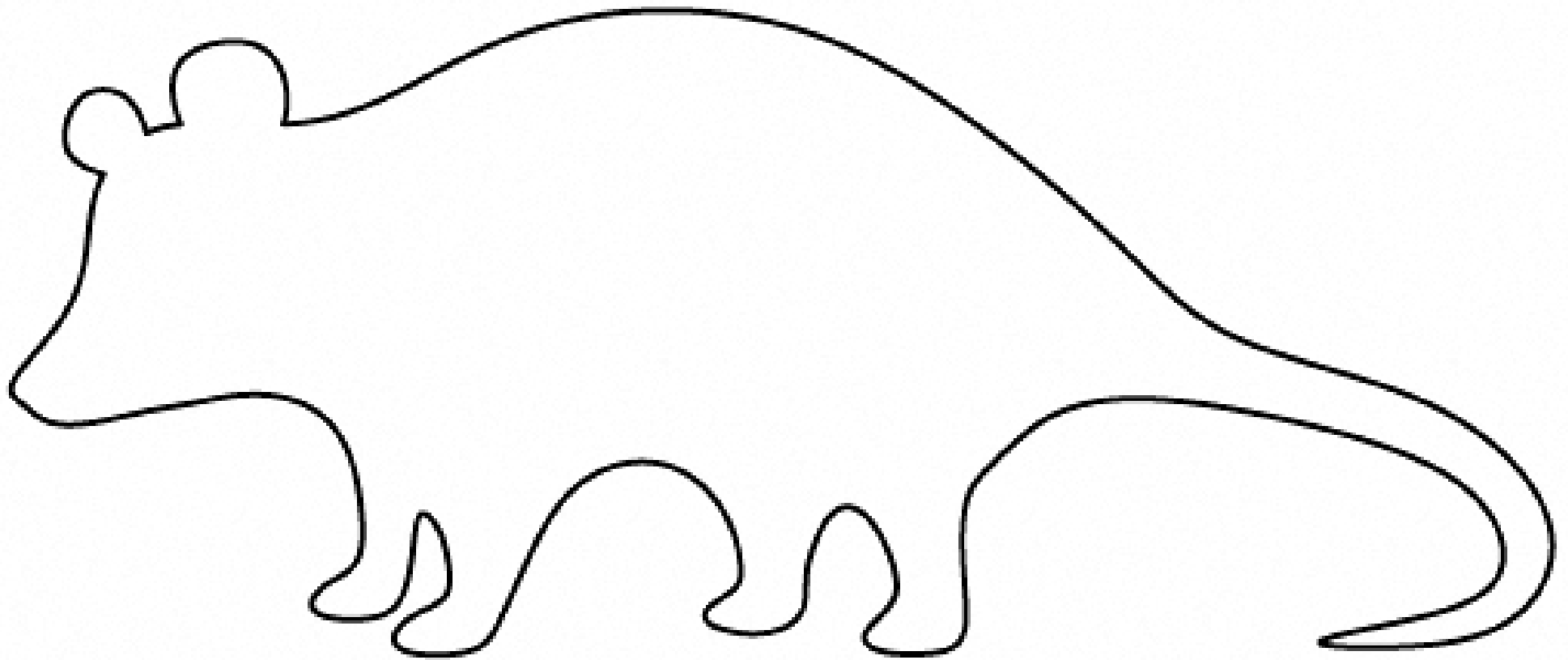
Punch a hole in your artwork and attached some string to it. Next, secure to a tree or hang it inside from a plant in a darkened room.

At night (or with the lights off) shine a Micador Dark Arts Magic Black Light on your creations and watch your nocturnal animals come to life!





For free activities and more micador.com.au



For free activities and more micador.com.au





For free activities and more micador.com.au